

KEARNEY LET'S MEET IN THE MIDDLE



Groups overnight in Kearney each night and enjoy exciting day trips to destinations in Kearney and across central Nebraska.

Day 1 Travel Day

Overnight: Kearney

Day 2 Holdrege

After breakfast we take a short drive south to Holdrege to tour **Phelps County Feeders** where we will learn more about what it takes to care for and feed cattle at this family-owned feedlot. Next, we take a tour of **Nebraska Star Beef** to learn how they market, sell, and ship their product from central Nebraska to all over the world. Lunch is at **Catrina's Mexican Cuisine** in downtown Holdrege before we head for a tour of the **Nebraska Prairie Museum** to view its World War II interpretive center displays, including a scale replica of the original German POW Camp Atlanta, southwest of Holdrege. Also exhibited are items donated by former military personnel who worked there, POWs who were interned there, and local families and businesses who hired the POWs during the war.



Depending on the time of year, a guided wildlife tour at **Funk Peterson Wildlife Trail** is available and a great way to become better acquainted with the wildlife and birds of this important watershed area. Before dinner we make a stop at **Lost Way Brewery** to sample their amazing hand-crafted beers and root beer. Afterward it is time for a true Nebraska culinary treat at **The Speakeasy** where we will feast on some of the most mouthwatering steaks you will ever enjoy. *Overnight: Kearney*

Day 3 Kearney

This morning, we head north of Kearney to Pleasanton to tour one of Nebraska's newest agricultural industries, the cultivations and processing of hemp for therapeutic uses at **Sweetwater Hemp Company**. The owners will explain the process of extracting and handling hemp to create products for medicinal purposes, such as depression, pain, and other ailments. We return to Kearney for a tour of **The American Automobile Experience** where we can wander through more than 200 classic cars that highlight the evolution and art of the automobile and its impact on our lives.

Afterward lunch is at **Alley Rose** in downtown Kearney to feast on one of its delicious locally prepared signature dishes. Next, we are off to **The Archway**, an impressive interactive museum that commemorates the nation's westward expansion through interactive exhibits and self-guided audio tours. On a side note, at a height of 310 feet, this is the only tourist attraction in the country to span a federal interstate highway. Now it is time to discover the art of Nebraska at **Museum of Nebraska Art** where more than 6,000 works by artists of regional, national, and international importance are on display. *Overnight: Kearney*



Day 4 Grand Island

After breakfast, we head to **Raising Nebraska** at Fonner Park. This 25,000-square-foot interactive museum connects consumers with farmers who raise their food by explaining the steps from “farm to fork.” Experience a virtual combine harvest experience, full-sized pivot irrigation system, a 50-foot-long interactive floor map of Nebraska, and an interactive dinner table.

Now it is time for lunch and to go back into the past at **Stuhr Museum of the Prairie Pioneer**. Declared one of the top ten living history museums in the country, this amazing museum transports us back to the early pioneer and settlement days of Nebraska. Fonner Rotunda houses one of the state’s finest collections of cowboy and Native American art and artifacts. Our last stop in Grand Island before heading back to Kearny is **Crane Trust Nature & Visitor Center** near Alda where we will learn more about one of nature’s most amazing natural phenomena. Each spring more than 600,000 sandhill cranes, 90 percent of the world’s population of these birds migrate through the Central Nebraska Flyway from Grand Island to North Platte. *Overnight: Kearney*

Day 5 Hastings, Red Cloud

After breakfast in Grand Island, we head south to Hastings to talk a walk on the wild side at the **Bigfoot Crossroads of America Museum** where we explore the many Bigfoot sightings and stories from Nebraska and around the world. Next, we experience three floors of natural and cultural history exhibits and view full dome astronomy shows in the Planetarium at the **Hastings Museum**.

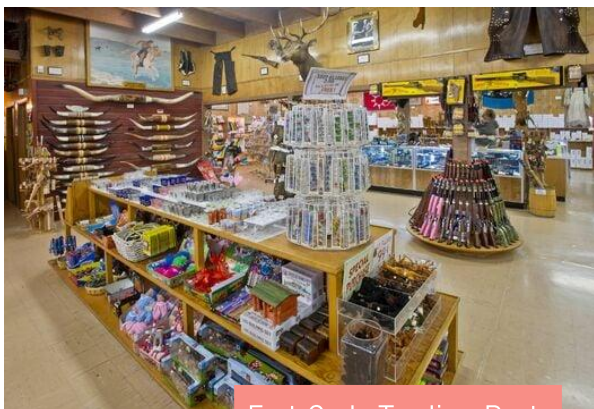


Hastings Museum

Lunch is at **Odyssey Downtown** where we will fill ourselves with fine food and craft cocktails in a refreshing urban atmosphere. Afterward, we head further south to the Nebraska-Kansas state line to follow in the footsteps of one of Nebraska’s most revered authors, Willa Cather, author of *O Pioneers!*, *My Antonia*, and *Death Comes for the Archbishop*. While in town, we will visit several nationally designated historic buildings prominent in Willa Cather’s life and books on a **Willa Cather Foundation Tour** before exploring the **National Willa Cather Center** and **Red Cloud Opera House**. *Overnight: Kearney*

Day 6 North Platte

After breakfast we head west to North Platte where our first stop will be the **Cody Park Railroad Museum** where we can climb aboard Union Pacific’s steam locomotive and also see UP’s #6922, the largest diesel locomotive ever made, peek inside the historic Hershey Depot, and climb aboard a mail car and caboose to view historic railroad memorabilia. Lunch today is an Old West adventure at **Buffalo Bill State Historical Park** where we will “Ride with the Wild Bunch.” We will meet Colonel William F. “Buffalo Bill” Cody and his wife to hear about their lives and their interesting adventures. Afterward, hop aboard a horse drawn wagon to nearby **Lincoln County Historical Museum** to tour the museum, including an authentic recreated Old West town and artifacts highlighting the story of the famous World War II North Platte Canteen.

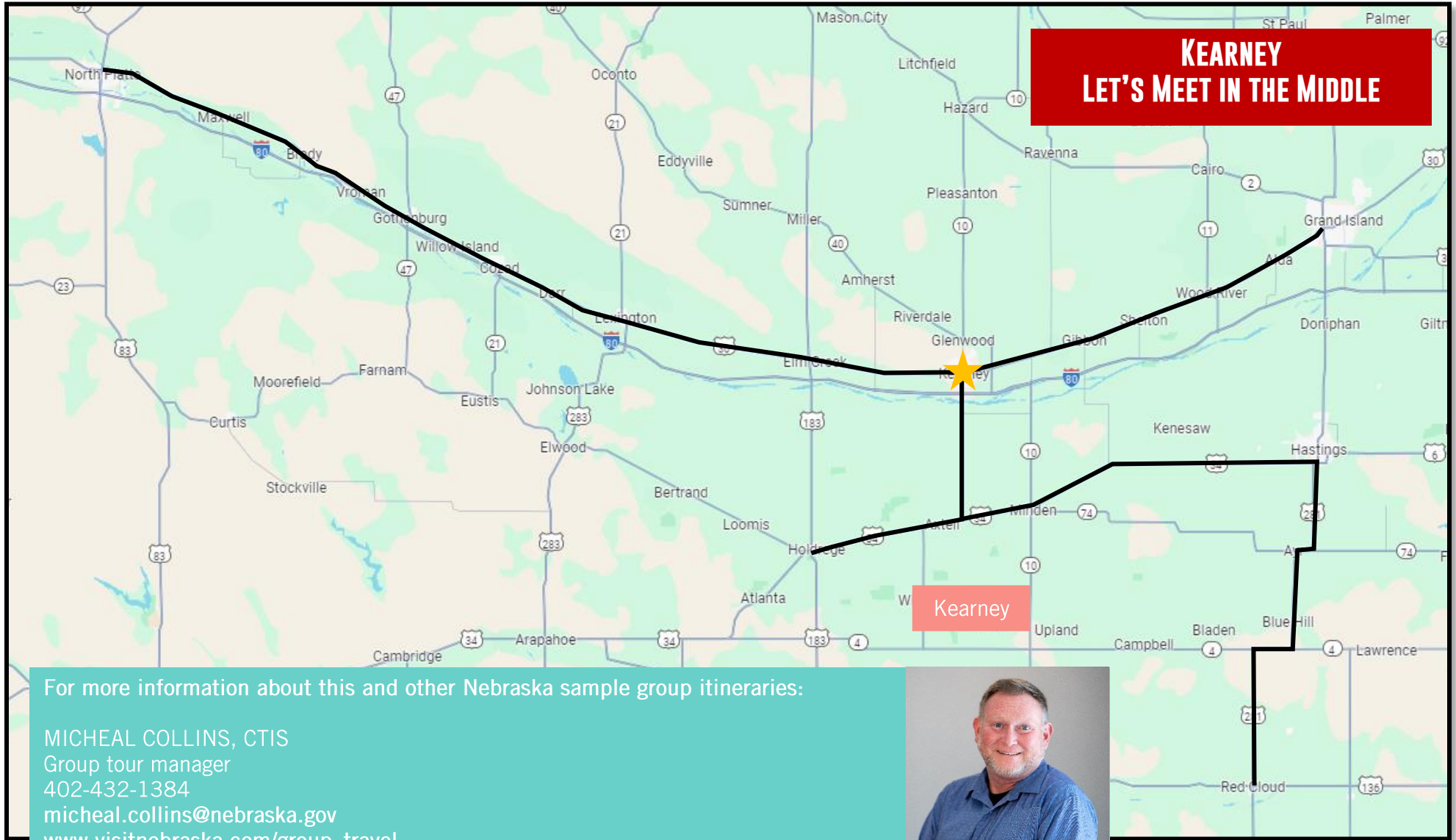


Fort Cody Trading Post

Now we head to North Platte’s historic Canteen District for a special ice cream donut sandwich, waffle sundae, or other tasty concoction at **Double Dips Ice Creamery**. Before departure, our final stop in town is **Fort Cody Trading Post**, one of Nebraska’s most eclectic gift and souvenir shops. Do not miss the working 20,000-piece miniature replica of Buffalo Bill’s Wild West Show and tour Old West exhibits in the newly renovated museum. Next on our tour is the **Golden Spike Tower**. Rising 8-stories above the tracks, the tower offers a panoramic view of Union Pacific’s Bailey Yard, the largest classification rail yard in the world, from an open-air platform or

enclosed viewing area. Over 10,000 rail cars pass through Bailey Yard each day, and you can see it all from your bird's eye view atop the tower. Now imagine having a private catered meal served on the 8th floor as the sun sets over the railyard. This is truly an experience you do not want to miss.

Overnight: Kearney



For more information about this and other Nebraska sample group itineraries:

MICHEAL COLLINS, CTIS
Group tour manager
402-432-1384
micheal.collins@nebraska.gov
www.visitnebraska.com/group_travel

